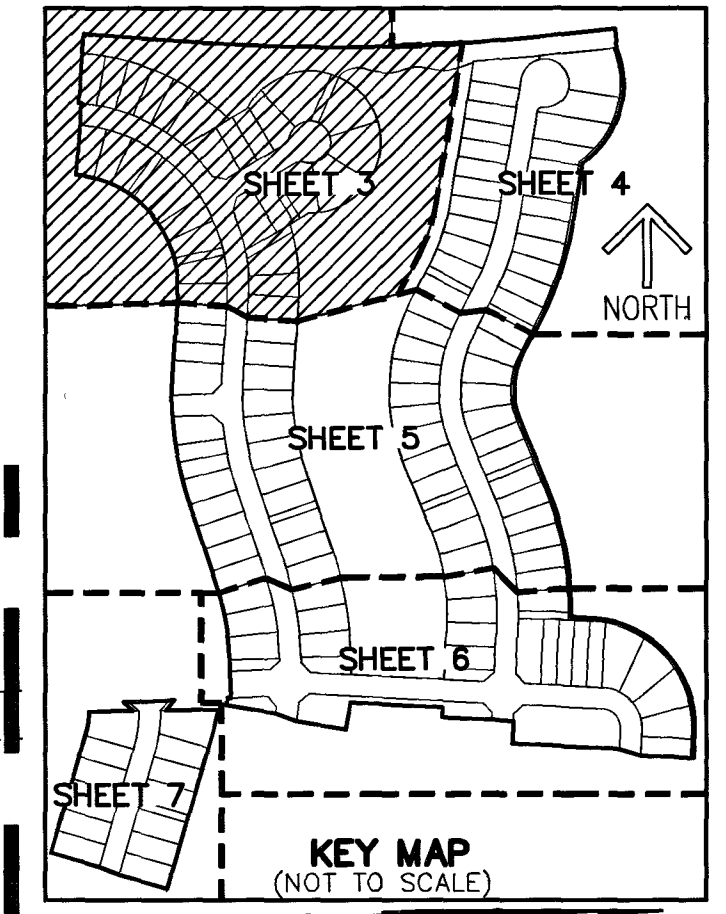


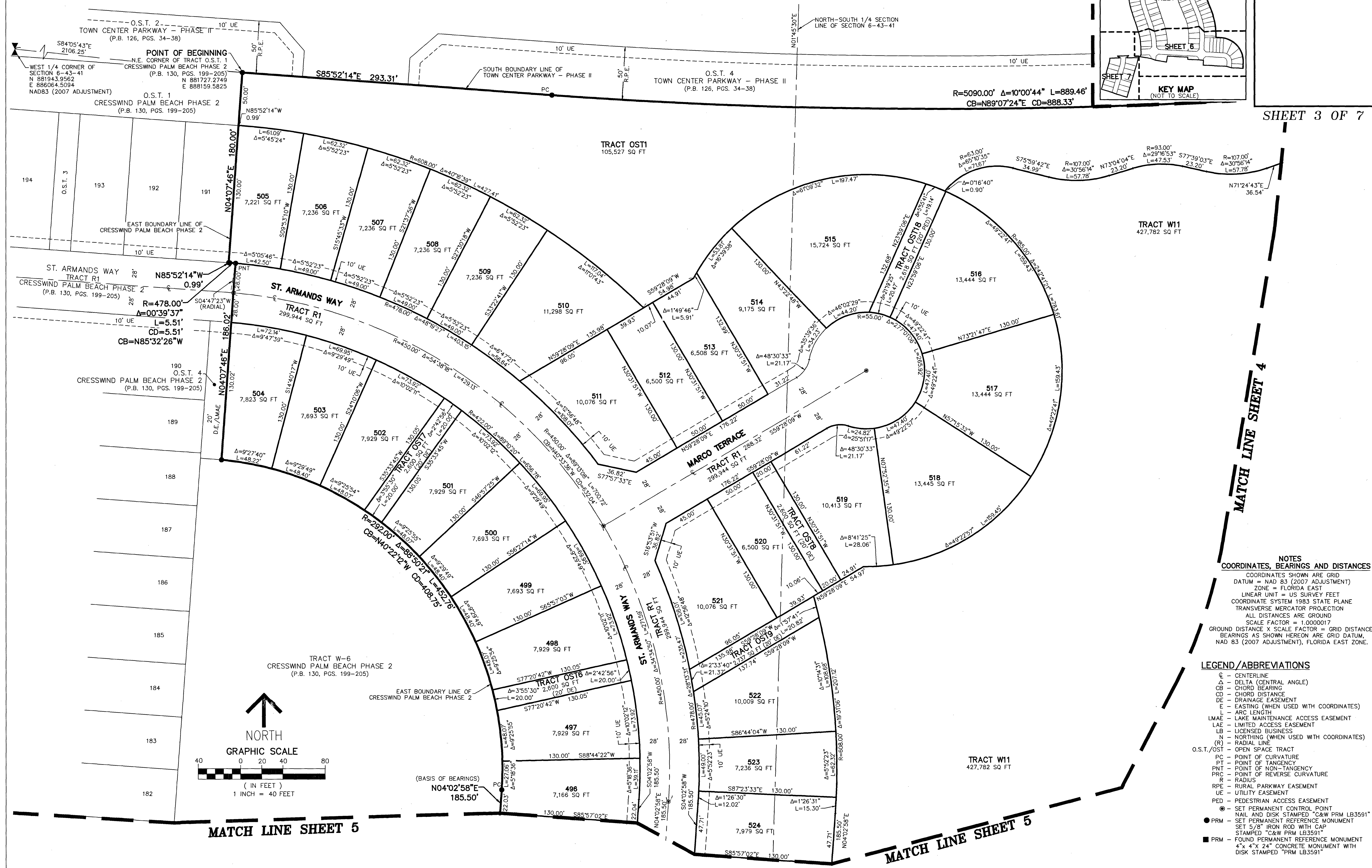
THIS INSTRUMENT PREPARED BY  
 DAVID P. LINDLEY  
 OF  
**CAULFIELD & WHEELER, INC.**  
 SURVEYORS - ENGINEERS - PLANNERS  
 7900 GLADES ROAD, SUITE 100  
 BOCA RATON, FLORIDA 33434 - (561)392-1991  
 CERTIFICATE OF AUTHORIZATION NO. LB3591

# CRESSWIND PALM BEACH PHASE 4

BEING A REPLAT OF PORTION OF TRACT O.S.T. 21,  
 CRESSWIND PALM BEACH PHASE 2, AS RECORDED IN PLAT BOOK 130, PAGES 199 THROUGH 205,  
 OF THE PUBLIC RECORDS OF PALM BEACH COUNTY, FLORIDA,  
 TOGETHER WITH A PORTION OF SECTION 6, TOWNSHIP 43 SOUTH, RANGE 41 EAST,  
 CITY OF WESTLAKE, PALM BEACH COUNTY, FLORIDA.



81



SHEET 3 OF 7

MATCH LINE SHEET 4

MATCH LINE SHEET 5

MATCH LINE SHEET 5

**NOTES**  
**COORDINATES, BEARINGS AND DISTANCES**  
 COORDINATES SHOWN ARE GRID  
 DATUM = NAD 83 (2007 ADJUSTMENT)  
 ZONE = FLORIDA EAST  
 LINEAR UNIT = US SURVEY FEET  
 COORDINATE SYSTEM 1983 STATE PLANE  
 TRANSVERSE MERCATOR PROJECTION  
 ALL DISTANCES ARE GROUND  
 SCALE FACTOR = 1.0000017  
 GROUND DISTANCE X SCALE FACTOR = GRID DISTANCE  
 BEARINGS AS SHOWN HEREON ARE GRID DATUM  
 NAD 83 (2007 ADJUSTMENT), FLORIDA EAST ZONE.

**LEGEND/ABBREVIATIONS**  
 C - CENTERLINE  
 Δ - DELTA (CENTRAL ANGLE)  
 CB - CHORD BEARING  
 CD - CHORD DISTANCE  
 DE - DRAINAGE EASEMENT  
 E - EASTING (WHEN USED WITH COORDINATES)  
 L - ARC LENGTH  
 LMAE - LAKE MAINTENANCE ACCESS EASEMENT  
 LAE - LIMITED ACCESS EASEMENT  
 LB - LICENSED BUSINESS  
 N - NORTHING (WHEN USED WITH COORDINATES)  
 (R) - RADIAL LINE  
 O.S.T./OST - OPEN SPACE TRACT  
 PC - POINT OF CURVATURE  
 PT - POINT OF TANGENCY  
 PNT - POINT OF NON-TANGENCY  
 PRC - POINT OF REVERSE CURVATURE  
 R - RADIUS  
 RPE - RURAL PARKWAY EASEMENT  
 UE - UTILITY EASEMENT  
 PED - PEDESTRIAN ACCESS EASEMENT  
 ● - SET PERMANENT CONTROL POINT  
 NAIL AND DISK STAMPED "C&W PRM LB3591"  
 ● - SET PERMANENT REFERENCE MONUMENT  
 SET 5/8" IRON ROD WITH CAP  
 STAMPED "C&W PRM LB3591"  
 ■ - FOUND PERMANENT REFERENCE MONUMENT  
 4" x 4" x 24" CONCRETE MONUMENT WITH  
 DISK STAMPED "PRM LB3591"